

Drop-in Replacement

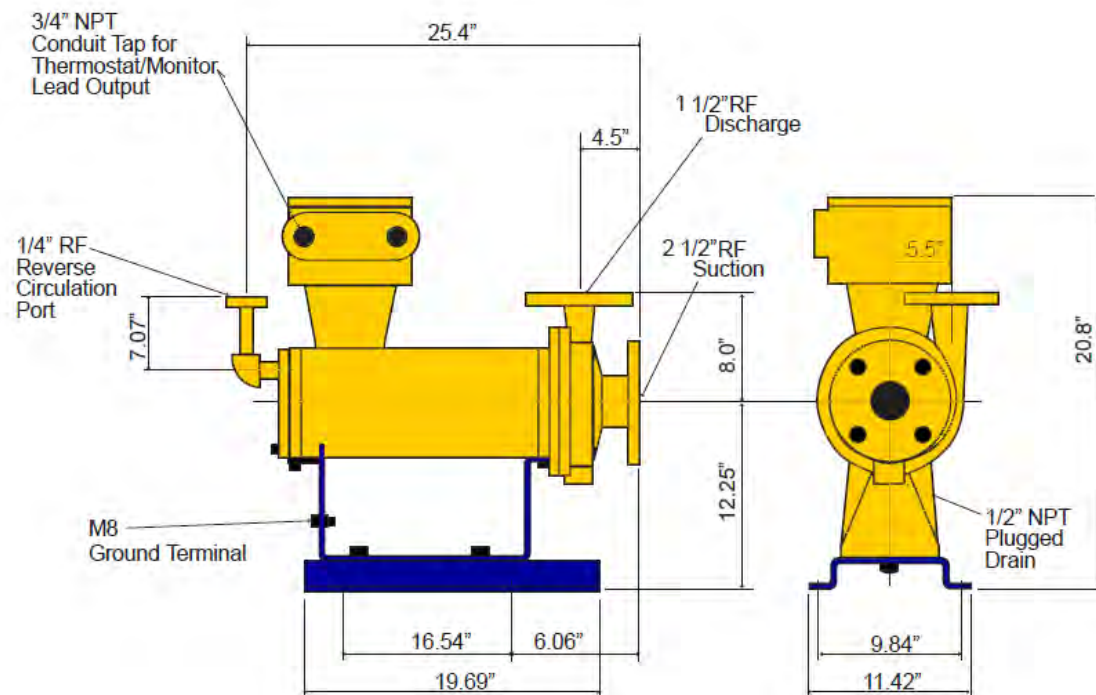
Flowdyne retrofit pumps are ideal replacement candidates for existing Imported & Others Indian make Ammonia pumps.

AMMONIA PUMP SPARES

The Pump have few spares i.e. one set of self lubricated Carbon Bush Bearing, Bearing Sleeve, Thrust Washer & Gasket & O-ring Sets, these Spares are recommended to stock for all clients for fields replacement and for smooth running of pumps for years.



PUMP DIMENSIONS



Dealer / Agent :

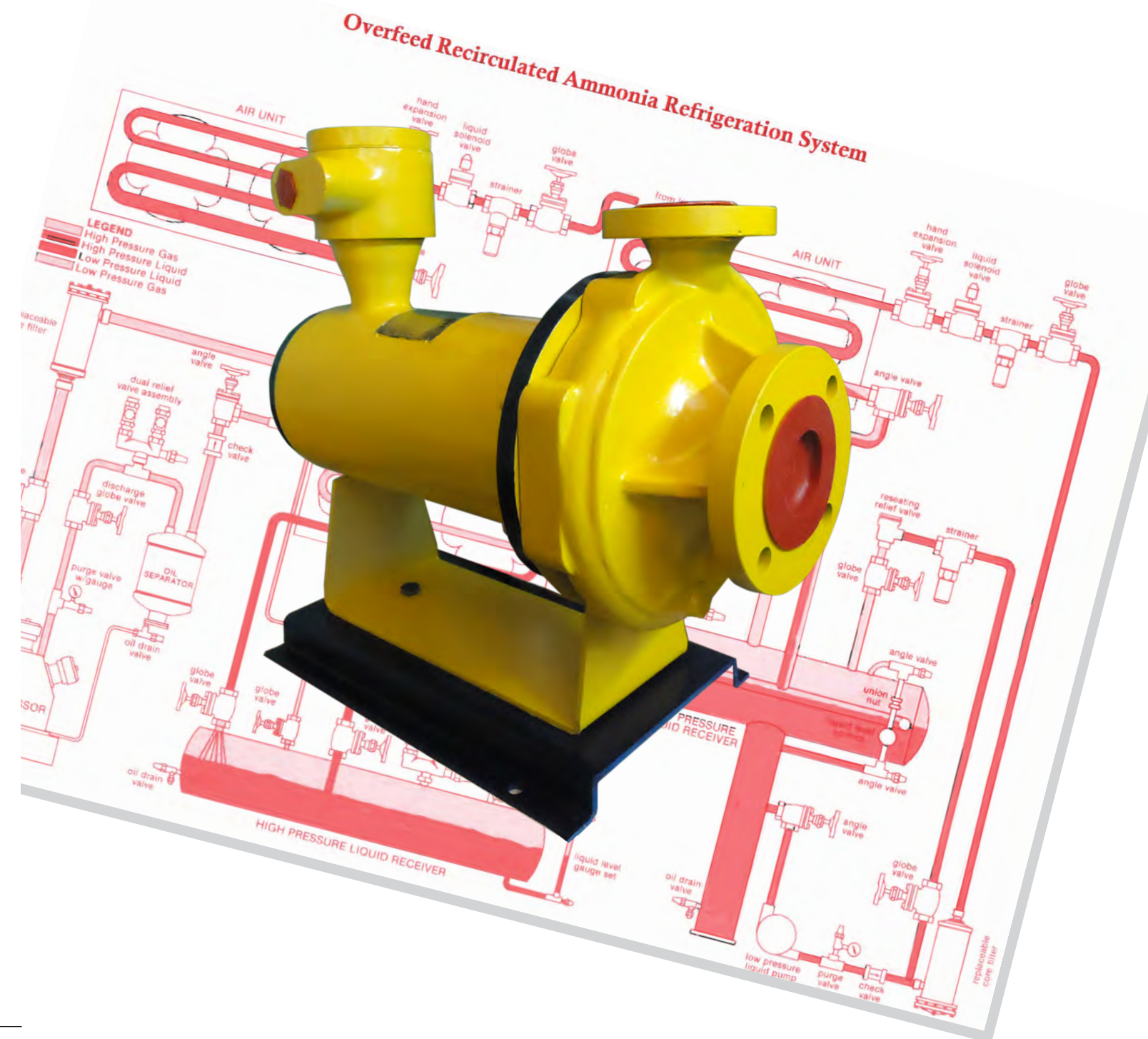


FLOWDYNE ENTERPRISES
Efficient by Design

RC Series

LIQUID AMMONIA CANNED MOTOR PUMPS

Your Preference, Our Innovation



FLOWDYNE ENTERPRISES

Regd. Address : 103, Aisha Manzil, Behrambaug Road, Jogeshwari (West), Mumbai - 400102.
Works/office : C-3, National Welfare Compound, Off New Link Rd., Laljipada, Kandivali (West), Mumbai-400067
☎ +91 22 65501001 📞 +91 97735 34159/+91 97024 97034
Email : info@flowdyneindia.com ; website : www.flowdyneindia.com

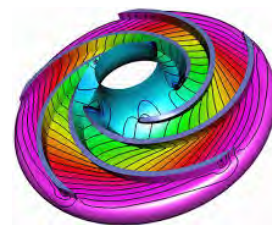
Cost Economical | Energy Efficient | Compact Design | Leakage Proof | Short Delivery



INNOVATIVE - ① RC Series AMMONIA PUMPS

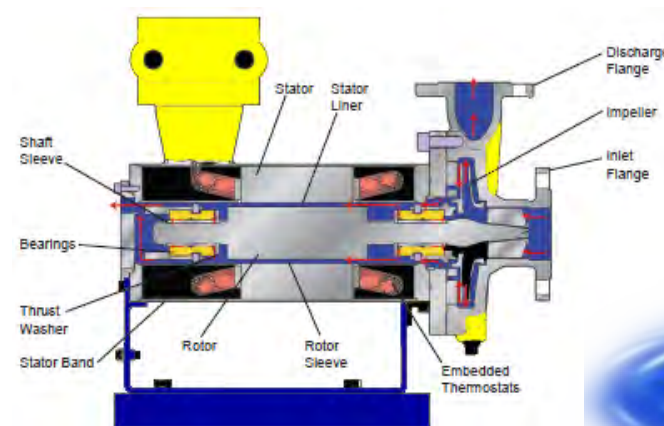
The demand of liquid Ammonia Pumps are increasing day by day in different segments of refrigeration Industries and this is because of its unique advantages and benefits with the overfeed system. Liquid Ammonia pump is the heart of the Overfeed system which pumps the liquid ammonia throughout the refrigeration system and it is important that it should run without any leakage and Trouble free operation for years.

FLOWDYNE Offers you the best liquid ammonia pumps with sealless canned motor technology with high efficiency and quality, outstanding durability ,reliability , inexpensive operation and ready stock availability.



APPLICATION

- Cold Storages
- Fish & Meat Plant
- Dairy
- Breweries
- Ice Cream Plants
- Ice Plants
- Pharmaceutical & Chemical Plants
- Refineries & Petrochemical Refrigeration



PUMPS MODEL DETAILS :

PUMP MODEL	FLOW (m ³ /hr)	HEAD (m)	MOTOR POWER (KW)	RATED CURRENT (AMP.)	ØS SUCTION	ØD DISCHARGE	WEIGHT (K.G)
RC 32-160/1.5	5.0	25	1.5 (2 HP)	4.8	50 (2")	32 (1.25")	75
RC 32-160/2.2	8.0	35	2.2 (3 HP)	6.3	50 (2")	32 (1.25")	90
RC 40-200/2.6	10	45	2.6 (3.5 HP)	6.8	65 (2.5")	40 (1.5")	95
RC 40-200/3.7	15	50	3.7 (5 HP)	9.0	65 (2.5")	40 (1.5")	100
RC 40-200/5.5	20	55	5.5 (7.5HP)	12.5	65 (2.5")	40 (1.5")	110
RC 40-250/7.5	25	75	7.5 (10 HP)	15.2	65 (2.5")	40 (1.5")	120

MATERIAL OF CONSTRUCTION

CASING	: SG IRON / C.I / CF8
IMPELLER	: SG IRON / WCB / CF8
BEARING	: CARBON GRAPHITE
BEARING SLEEVE	: SS316 + HCR
THRUST WASHER	: SS316 + HCR
STATOR CAN	: SS316L
GASKET / O-RINGS	: CFT/PTFE
FLANGES	: ANSI B16.5 150#
SHAFT	: SS410 / SS304

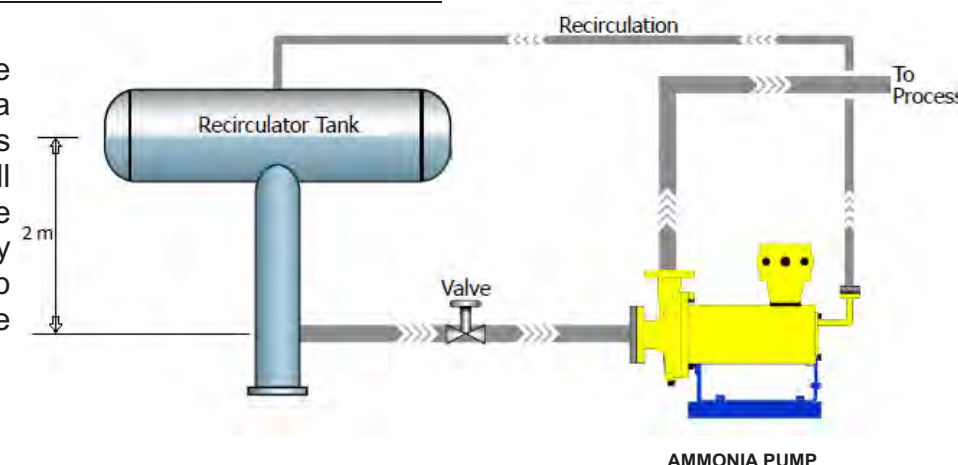
CANNED MOTOR SPECIFICATIONS

OPERATING TEMPERATURE	: +30 TO -120°C
UPTO	7.5 KW (10HP)
SYNCHRONISING SPEED	3000RPM
VOLTAGE	415V
FREQUENCY	50Hz
ENCLOSURE	: IP66

Note : Motor upto 18.5KW (25HP) are available on demand as per higher flow & head requiremen ts.

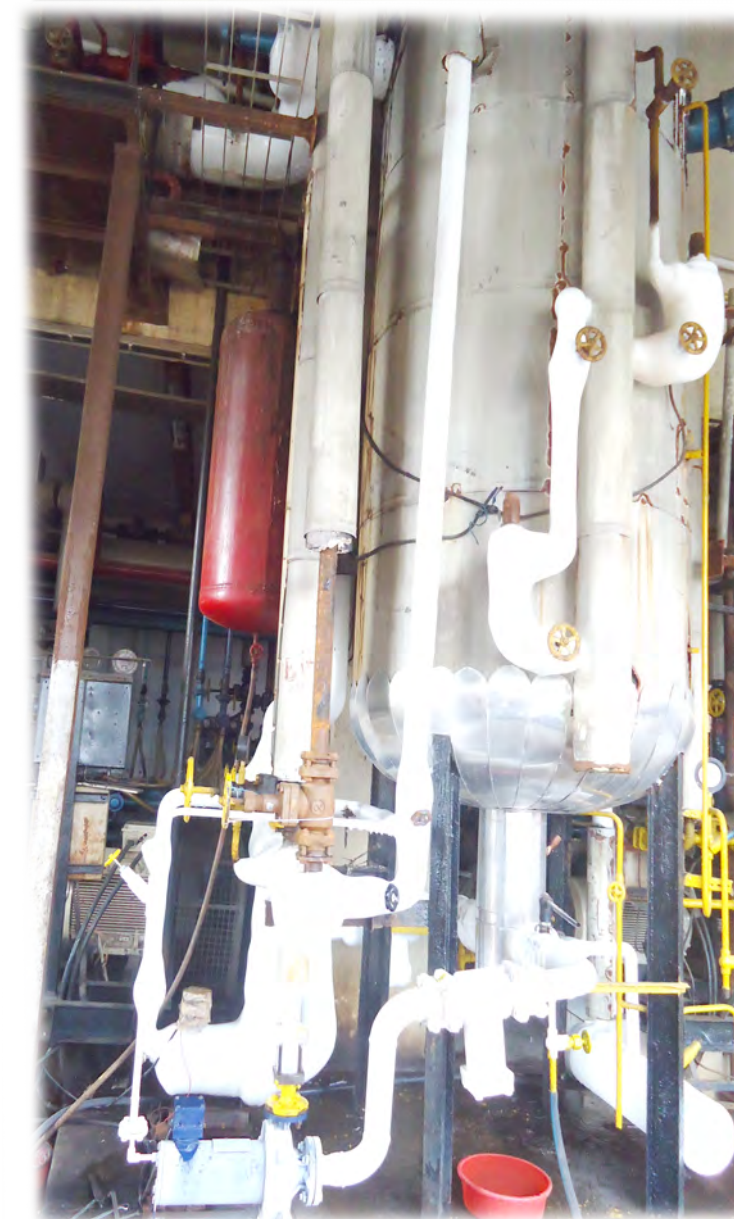
RECOMMENDED PIPING ARRANGEMENT

The key to the successful ammonia process application is the circuit design. All piping should be installed in such a way as to permit any trap gas to migrate into the L.P Receiver.



BENEFITS

- Highly Efficient - Low Operation Cost
- Compact Size & Less Floor Space
- Product Lubricated & Cooled
- Hydro-dynamic Bearing Design
- True Secondary Containment
- No Alignment Required
- No Mechanical Seal



PERFORMANCE TESTING BED

SITE INSTALLATION

